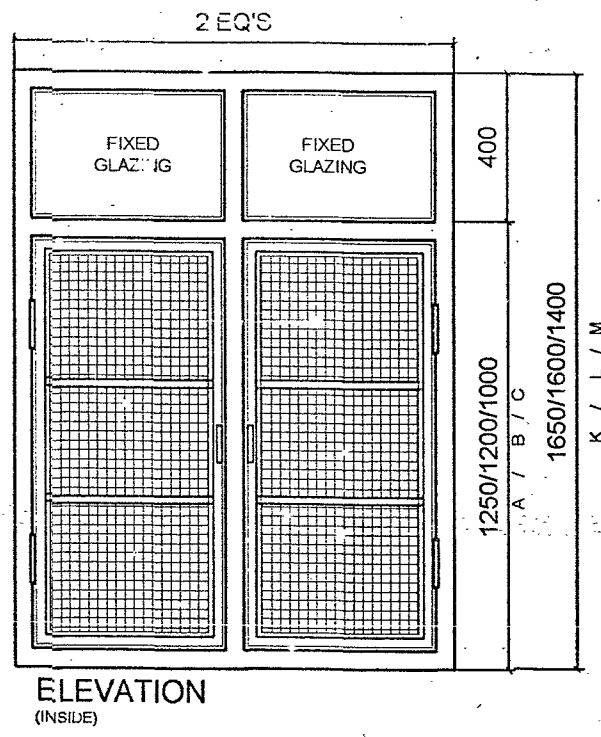
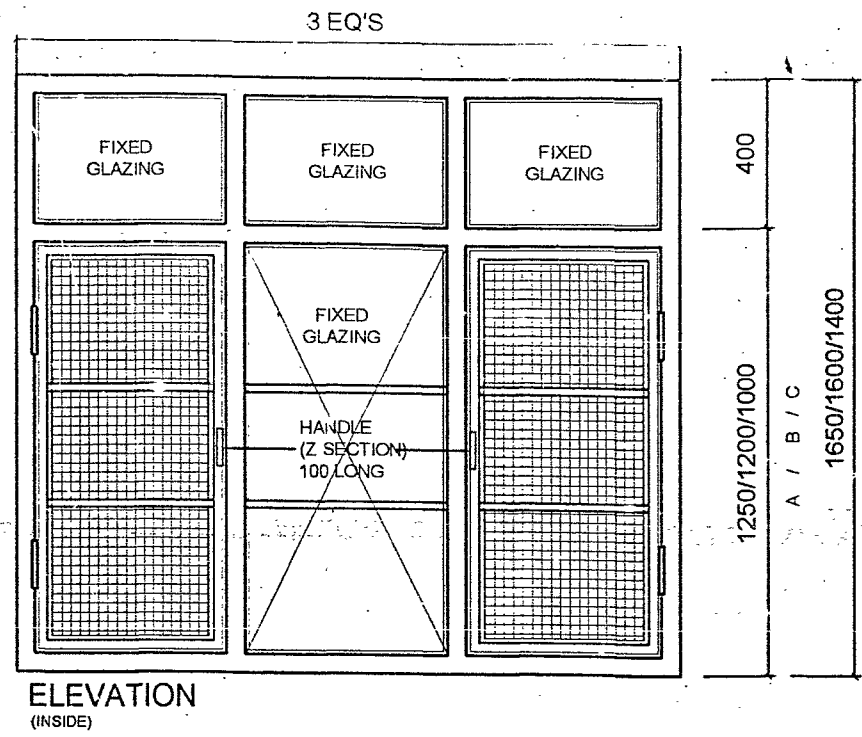


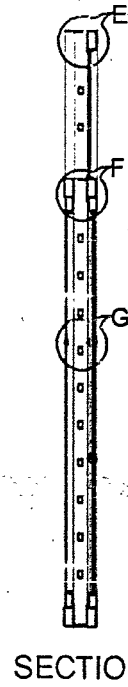
ELEVATION (INSIDE)



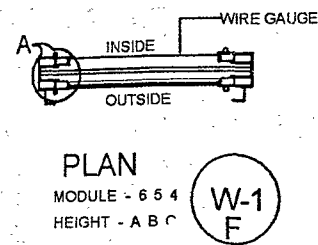
ELEVATION (INSIDE)



ELEVATION (INSIDE)

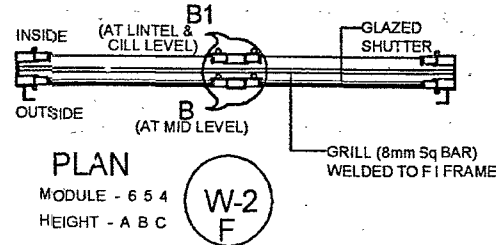


SECTION



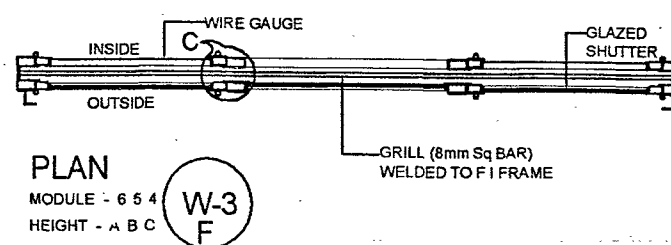
PLAN
MODULE - 654
HEIGHT - A B C

W-1
F



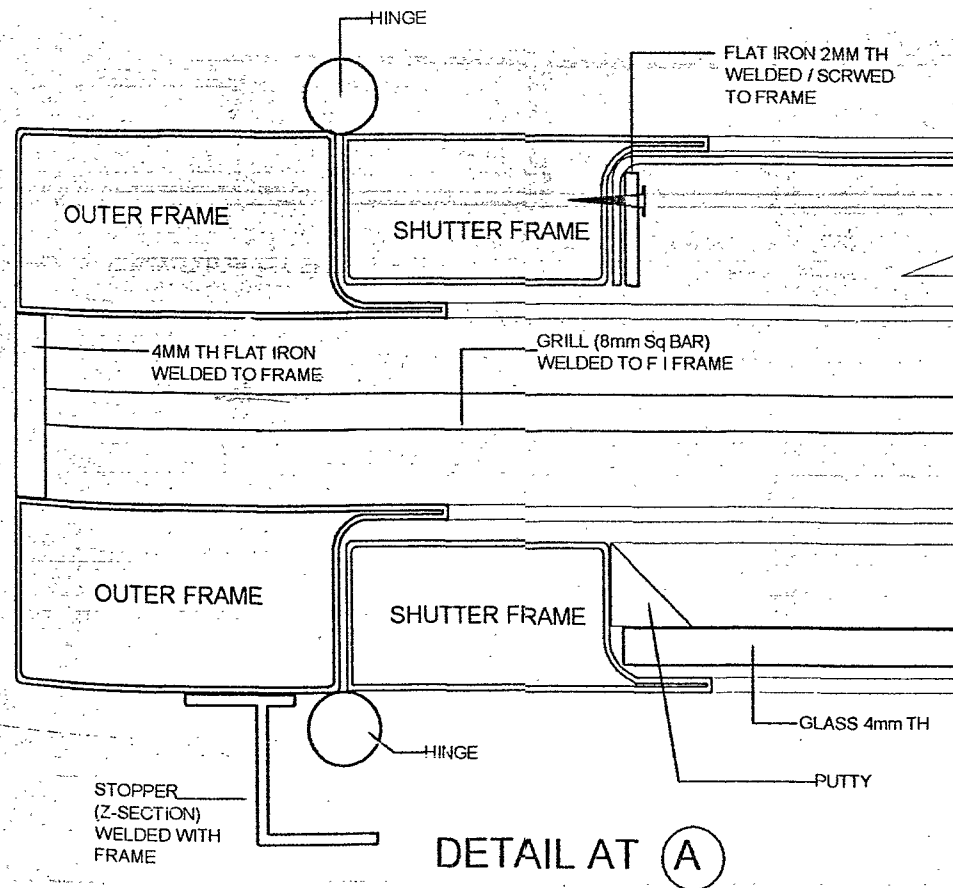
PLAN
MODULE - 654
HEIGHT - A B C

W-2
F

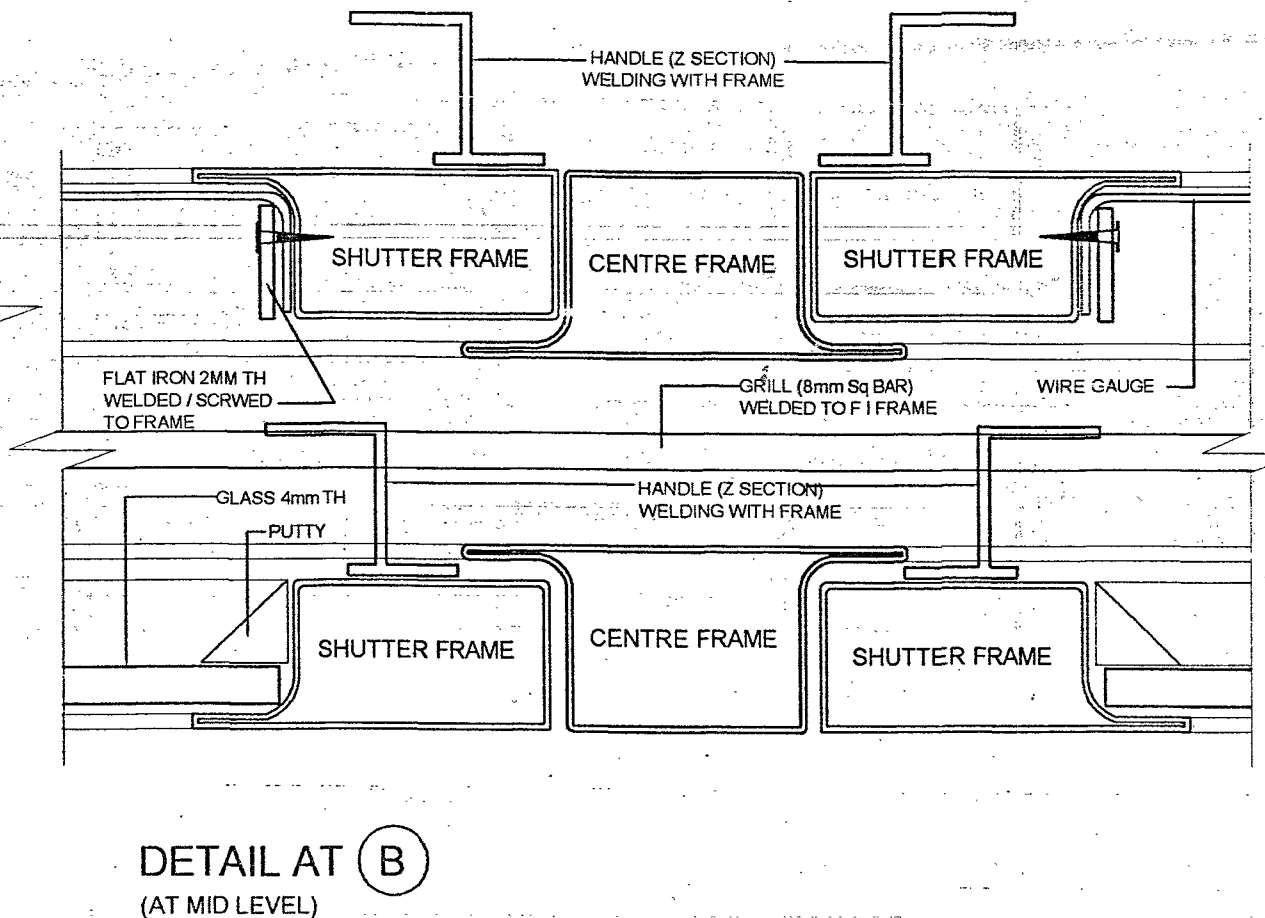


PLAN
MODULE - 654
HEIGHT - A B C

W-3
F



DETAIL AT (A)



DETAIL AT (B)
(AT MID LEVEL)



NOTES

- CONTRACTOR TO CHECK & VERIFY ALL THE DIMENSIONS BEFORE EXECUTION OF THE WORK.
- FIGURED DIMENSIONS SHALL BE FOLLOWED.
- ALL DIMENSIONS GIVEN IN THIS DRG ARE IN MILLIMETRES UNLESS OTHERWISE SHOWN.
- SIZE OF WINDOW MENTIONED HERE IN IS CLEAR SIZE OF MASONRY OPENING A TOLERANCE OF 10 mm ON EITHER SIDE SHALL BE ALLOWED WHEN THE WINDOWS ARE FITTED IN TO BUILT IN OPENING.
- WIRE GAUGE SHUTTERS IN FLY PROOF WINDOW (F) SHALL BE MADE OPENABLE INSIDE UNLESS OTHERWISE MENTIONED.
- 5.5mm TH PLAIN SHEET GLASS PANES SHALL BE PROVIDED TO ALL WINDOWS UNLESS OTHERWISE SPECIFIED.
- 'F' STANDS FOR MOSQUITO PROOF WIRE GAUGE WINDOW (HAVING GLAZED AND WIRE GAUGE SHUTTER) A, B, C & K, L AND M HEIGHT AS 1250, 1200, 1000, & 1650, 1600, 1400 RESPECTIVELY.
- ALL WINDOWS OF TOILETS, BATH & W/C SHALL HAVE PIN HEAD GLASS.
- IN CASE OF R.C.C. COL/R.C.C. WALL THE WINDOWS FRAME SHALL BE FIXED WITH DASH THRU BOLTS OF STANDARD QUALITY AND SIZE AT 300MM C/C.
- ONE HANDLE & 2 NOS TOWER BOLTS 150 mm LONG SHALL BE PROVIDED TO EACH SHUTTER.
- THE HOLDFAST LUGS FOR DOORS WINDOWS AND VENTILATORS SHALL BE EMBEDDED IN PCC 1:3:6 OF SIZE 150X 150X TH OF WALL.
- BOX STEEL SECTION USED IN FRAME, SHUTTER FRAME AND CENTRE FRAME.
- IN MAIN PLANS THE SUFFIX OF THE 'W' REPRESENTS THE NUMBER OF PANELS OF WIDTH SAME AS 6, 5 & 4 x 100 mm.
- PIN HOLE @ 300 C/C TO BE PROVIDED FOR SUPPORTING GLASS WITH G.I CLIPSWIRE IN CASE OF GLAZED SHUTTERS.
- 2 NOS OF PINTOL HINGES 75mm LONG 12 mm dia WITH ONE PART OF THE HINGE SPOT WELDED WITH FRAME & OTHER WITH SHUTTER FOR EACH OPENABLE SHUTTER.
- 4 NOS FLAT IRON HOLD FAST SHALL BE WELDED WITH EACH WINDOW.
- MODULE 6, 5, 4 DENOTES 600, 500 & 400MM WIDE SIZE OF EACH SHUTTER.

S NO	DATE	DESCRIPTION	INITIAL
REVISION			

TYPICAL DETAIL OF BOX WINDOW (STEEL) WITH FLY PROOF SHUTTER

DATE	01/05/08	CHIEF ENGINEER JALANDHAR ZONE	SH NO
DRAWN			1/3
CHECKED			
SCALE	AS SHOWN		DRG. NO. CEJZ / TD- 1020/08



 ADD (ARCH)